

# REGIONAL COMPREHENSIVE PLAN (RCP) FACT SHEET

## THE REGIONAL COMPREHENSIVE PLAN:

*Connecting local and regional transportation and land use plans*

*Implementation through incentives and collaboration*

*Involving our neighboring counties, tribal governments, and Baja California*

*Promoting public involvement and collaboration*

## Our Vision. Our Future.

In June 2004, the SANDAG Board of Directors unanimously approved the Regional Comprehensive Plan (RCP). The innovative plan serves as the foundation for integrating land use, transportation, infrastructure needs, and public investment strategies for the San Diego region.

The RCP is the long-term planning framework for the San Diego region. It defines a vision and provides a framework to connect local and regional policy decisions that support our shared vision of the future. It balances population, housing, and employment growth with habitat preservation, agriculture, open space, and infrastructure needs. It moves us toward a more sustainable future—one with more choices and opportunities for all residents.

Today, each city and community in the region makes its own decisions regarding land use. The RCP looks at these individual decisions as a whole; assesses their collective impacts; and examines cumulative development trends well into the future. The RCP builds upon the best elements of our existing local general plans and regional infrastructure plans and provides a blueprint for where and how we want to grow. The RCP also identifies challenges that we face as a region and offers guidance for making better choices, both individually and collectively, thereby providing

an alternative to where we could end up if we were to continue with business as usual.

Citizens, elected officials, stakeholders from throughout the region, and regional infrastructure providers worked together with SANDAG to prepare the RCP and one of its key components, the Integrated Regional Infrastructure Strategy (IRIS). The IRIS is an investment strategy that will help the region meet its collective infrastructure needs.

The RCP emphasizes the critical link between transportation and land use planning and development, and demonstrates how these connections can be strengthened. It calls for focusing transportation and other infrastructure investments in smart growth opportunity areas, introducing an incentive-based approach to achieving our urban form goals, and meeting our infrastructure needs.

The RCP looks beyond our borders taking into account the planning and growth underway on local Native American land as well as in our neighboring areas, such as Imperial, Orange, and Riverside Counties, and Baja California, Mexico. It looks at the equity in our planning processes: do all communities have access to the region's resources and do all residents have an equal opportunity to participate in the process.

*(Continued on reverse)*



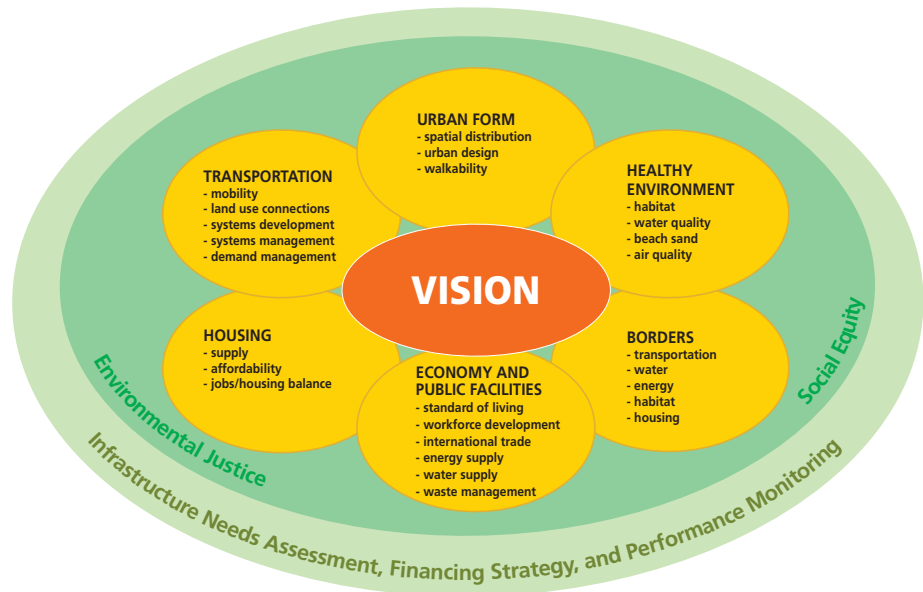
401 B Street, Suite 800  
San Diego, CA 92101  
(619) 699-1900  
Fax (619) 699-1905  
[www.sandag.org](http://www.sandag.org)



## REGIONAL COMPREHENSIVE PLAN for the San Diego Region

### THE REGIONAL COMPREHENSIVE PLAN:

- » Identifies ways to connect transportation and land use plans using smart growth principles
- » Uses transportation and land use plans to guide environmental and infrastructure decisions
- » Promotes collaboration and incentives to implement regional goals and establishes a context in which to address regional infrastructure needs



### Summary of Implementation Efforts

Since adoption of the RCP, SANDAG has been working hard to implement key components of the plan. Major implementation activities include:

- » The development of a “Smart Growth Concept Map” (based on input from the 18 cities and county) showing existing, planned, and potential smart growth areas in the region;
- » The adoption of a Pilot “Smart Growth Incentive Program,” providing almost \$24 million of funding for capital improvements for smart growth projects within the region;
- » The development of an “Environmental Mitigation Program,” which provides funding for mitigation of local and regional transportation projects and additional funding for habitat acquisition, management, and monitoring activities that will help implement the Multiple Species Conservation Program (MSCP) and the Multiple Habitat Conservation Program (MHCP);
- » The development of the final 2030 Regional Growth Forecast to be used in the update of the Regional Transportation Plan (RTP) and other planning activities;
- » The adoption of the Regional Housing Needs Assessment (RHNA) allocations for jurisdictions within the San Diego region, which balances affordable housing throughout the region;
- » Integration of RCP smart growth and sustainability principles into the current 2007 RTP update; and
- » The release of the “RCP Baseline Monitoring Report,” which serves as a mechanism to track RCP implementation and establishes a benchmark for future monitoring.

More information on each of these efforts can be found at [www.sandag.org/rcp](http://www.sandag.org/rcp).